



## The A.N.D.F.H.G. News sheet.

Issue 10

October 2009.



### THE COMMITTEE WORKING FOR YOU

<b>President:</b>	Peter Applebee
<b>Vice President:</b>	Ivan Randall
<b>Secretary:</b>	Margaret Flaiban
<b>Treasurer / Membership:</b>	Helen Stein
<b>Publications Editor:</b>	Colin Withall
<b>Fundraising Officer:</b>	Tammy Martin
<b>Publicity Officer:</b>	Barb Such
<b>General Committee:</b>	Bev Burke Shirley Bulley



### This Months News from the Editor.

Our Guest Speaker's night last month featured Paul Bartlett, an antique dealer, valuator and auctioneer, the night was a huge success with 40 members and guests' attending, and there was standing room only in our meeting room. Paul provided an entertaining and humorous talk on collectables, as well as giving some good, and the bad news, concerning some of the items that were brought along for appraisal.

Paul stayed on for quite some time after his talk, and answered many questions, advising members on Insurance matters. The night was so well received and obviously interesting, that many of those present have requested a return visit by Paul some time in the near future.

Our Thursday Research days have proven to be very popular, so much so, that a problem has arisen for our Research Team when trying to accommodate the number of people attending.

Many members are requesting the services of Ivan and Margaret and other committee members, to assist them in their Family History Research, in most cases requiring full time assistance or asking for the research to be conducted for them.

Consequently, a booking list has necessarily been introduced to accommodate these requests;

the problem is that there are only four computers available thus far, and the Committee is currently examining this problem, and are attempting to purchase additional computers desks, as well as a sturdy table to house the microfilm reader. Remember that we share the building with the Salisbury Historical Society at the moment, and space is a premium.

The original concept of the Group was to encourage people to engage in Family History, and help them to conduct their own research by instructing them how to use the Internet for research, using various Family History Research sites, and other resources such as Census and IGI. The Committee has been concerned by this problem for some time, and have decided that beginning in the New Year of 2010; we will be introducing Research fees.

(1) Members who wish to use the computers to conduct their own research with limited assistance and advice, the charge for Internet use will be **\$2** per hour. This fee will also apply when Lap Top Computers within the building are connected to the Internet using ANDFHG's facilities.

(2) Members wishing to have their research conducted for them, or have the full time assistance of our research team, a fee of **\$5** per hour will be charged.

(3) Non members, requesting their research be conducted totally, or with full time assistance of our Research team, \$10 per hour.

(4) Printing of documents **20 cents** per page.

(5) Ordering Birth, Marriage and Death Certificates from the UK GRO for England and Wales \$20 each.

The foregoing fees have been necessarily introduced because of the cost of providing the Internet; printing is an ongoing expense, as are the continuing maintenance and upgrading of computers and other equipment.

The newly introduced Research fees are well below those charged by several other Research groups.

We hope that all members will understand and accept these changes, as explained this will not come into force until next year.

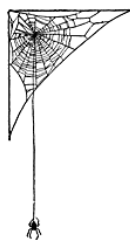
A service is also currently available for the purchase of England and Wales BDM Certificates; please refer to Ivan Randall who will arrange the ordering for you. It would assist him, if when making the request, full details for the Certificate be given. Unfortunately, Scotland and Ireland BDM Certificates are not available from this service.●



## A Report from the Convenor .....Shirley Bulley

. All Members of the Legacy Users Group Please Note.

Due to a long week end holiday, there will not be a Legacy Users Group meeting this Month.  
Enjoy your weekend, and we Hope to see you all on Monday 2<sup>nd</sup> November at 7pm.



### What is New on the Web.

**Scotland's People** have announced that they have added Modern Marriages to their website dating from 1934 – 2006. This now gives a range of statutory records as Indexes of Scottish births and deaths (1855-2006) marriages (1855-2006) and Images of births (1855-1908) marriages (1855-1933) and deaths (1855-1958). To explore the information on the website go to  
<http://www.scotlandpeople.gov.uk>

If you're looking for parish records

**Oxfordshire Family History Society** has some good CD's of most parishes  
<http://www.ofhs.org.uk/>

**Berkshire Family History Society** also has some good CD's of parishes  
<http://www.berksfhs.org.uk/>

**Essex Parish** records are going on line in stages also lots of old photos with index of lots of documents (enough in Index to give you a good clue about the article)  
<http://seax.essexcc.gov.uk/default.asp>

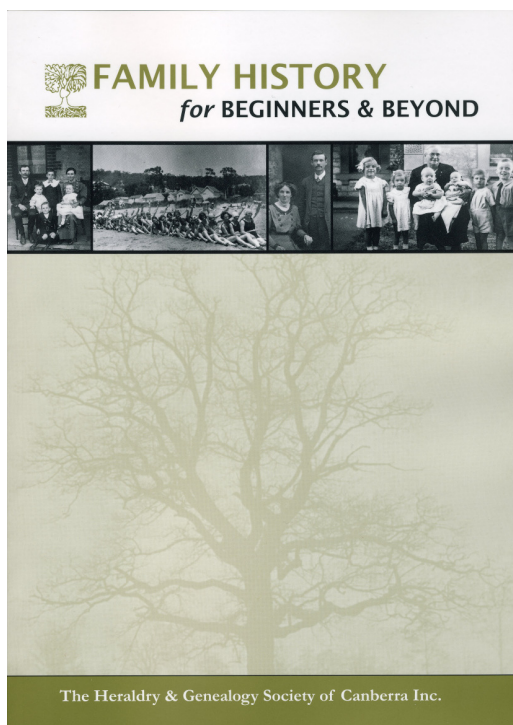
**Kent - the Medway** area Parish records online and some other bits also great Photos and paintings of churches  
<http://cityark.medway.gov.uk/>

Quite and interesting site to browse, has quite a bit on English youths aged 15 to 19 who came to South Australian under the farm apprentices Scheme 1913-1914. Visit  
<http://www.familytreeoz.com> ●

## Family History for Beginners and Beyond.

Published by the Heraldry and Genealogical Society of Canberra Inc. August 2009.

If there was but one book that every Family Historian should have in their Library, it would



be **Family History for Beginners and Beyond**. This very comprehensive, versatile up to date book compiled by Sue Fallon, is packed full of information and is a necessary guide for the Beginner and the Experienced Family Historian alike.

**Family History for Beginners and Beyond**, consists of 178 pages of all the information a Researcher needs, covering such subjects as:

- Where do I start.
  - Computers and Family History.
  - Using resources in Libraries and Archives.
  - BDM's in Australia.
  - Convict ancestors.
  - Shipping and Immigration.
  - Wills and Probate in Australia.
  - Ancestry in England and Wales, including the Channel Islands.
  - Scotland Research.
  - Beyond the basics.
  - And much more 178 pages of graphs, charts, hints and valuable information.
- The book is soft cover about A4 size.

**Available only from ANDFHG Inc for \$25 Plus postage and handling of \$10**

**Family History for Beginners and Beyond is not available from book stores.**

**Contact ANDFHG at our Club Rooms or by Post Order to ANDFHG Inc PO Box 32. ELIZABETH S.A. 5112.**

## Recommended Television viewing

The image is a television advertisement for the show 'Who Do You Think You Are?'. It features a blue sky and a single tree in a field. The text is as follows:

WHO  
DO YOU THINK YOU ARE?

**SERIES 2 STARTS SUNDAY 27th SEPTEMBER 7.30pm on SBS**

Featuring Ron Barassi | **Sigrid Thornton** | Ben Mendelsohn  
**Christine Anu** | Maggie Beer | **John Butler**

"...explores the family histories of its subjects with class and humour.  
Verdict: A Hit." - Michael Idolo, SMH 31/12/07

"... surprising, extraordinary and often moving" Sunday Telegraph

Produced by Artemis International and Serendipity Productions.  
Based on a series created by Wall to Wall Media and licensed by Wall to Wall Television.

[www.sbs.com.au/whodoyouthinkyouare](http://www.sbs.com.au/whodoyouthinkyouare)



## Important dates on the Calendar.

**Thursday October. 1<sup>st</sup> 2009 10.00 till 4.00pm  
Mid-Week Open Day.**

**Thursday October. 8<sup>th</sup> 2009 10.00 till 4.00pm  
Mid-Week Open Day.**

**Saturday October. 10<sup>th</sup> 2009 1pm-4pm  
Research and Networking Day**

**Thursday October. 15th 2009 10.00 till 4.00pm  
Mid-Week Open Day.**

**Thursday October. 15th 2009 7.00pm  
Lee Hammond –  
"Brothels...Music...Dancing & Revelry in the City of Churches".**

**Thursday October. 22nd 2009 10.00 till 4.00pm  
Mid-Week Open Day.**

**Saturday October 24<sup>th</sup> 2009 1pm to 4pm  
Research an Networking Day**

**Thursday October. 29th 2009 10.00 till 4.00pm  
Mid-Week Open Day.**

**Monday Nov. 2nd 7.00pm  
Legacy Users Group Meeting.**

**Thursday Nov. 5th 2009 10.00 till 4.00pm  
Mid-Week Open Day.**

**Thursday Nov. 12th 2009 10.00 till 4.00pm  
Mid-Week Open Day.**

**Thursday Nov. 19th 2009 10.00 till 4.00pm  
Mid-Week Open Day.**

**Thursday Nov. 19th 2009 7.00pm  
End of Year Breakup - Trivia Night**

## On Our Birthday List



On behalf of all Members, the Committee extends Congratulations and Best Wishes to the following members who are celebrating their Birthday during this period.

### October.

<i>1st</i>	<i>Christine</i>	<i>Wynne</i>
<i>1st</i>	<i>Gaynor</i>	<i>Williams</i>
<i>10<sup>th</sup></i>	<i>Jean</i>	<i>Wood</i>
<i>14<sup>th</sup></i>	<i>Raymond</i>	<i>Hicks</i>
<i>15<sup>th</sup></i>	<i>Beverly</i>	<i>Burke</i>
<i>26<sup>th</sup></i>	<i>Mary</i>	<i>Leiper</i>

### November

<i>3<sup>rd</sup></i>	<i>Terrilisia</i>	<i>Southon</i>
<i>9<sup>th</sup></i>	<i>John</i>	<i>Harkness</i>
<i>23<sup>rd</sup></i>	<i>Andrew</i>	<i>Richards</i>
<i>23<sup>rd</sup></i>	<i>Peter</i>	<i>Applebee.</i>

Happy Birthday, May you all enjoy many more.

# **GUEST SPEAKER'S NIGHT.**

**7PM Thursday OCTOBER 15th.**

**ANDFHG meeting rooms Ann Street Salisbury.  
(Old Police Station)**

**Featuring**

**LEE HAMMOND**

**“Brothels, Music, and Revelry in the City of Churches”**

“The West End of Adelaide was generally a very poor district, in the early 20<sup>th</sup> Century, following WWI and the depression, many women had to fend for themselves, jobs were not available, and to enable them to provide for their families, many became sex workers solely to survive in a city renown for its Christian standards and high moralistic intolerance”

#### **A little about Lee Hammond**

Lee worked for many years with the former Community Welfare Department and the Children's Services Office. It was through this work that she gained an interest in the way that many women coped in very trying circumstances and with few resources. In 2007 Lee completed her Doctorial Thesis on women in the West End of Adelaide, in the early 20<sup>th</sup> Century. The topic of prostitution was an unexpected adjunct to this study, when it became obvious that there were many brothels in the area and that sex work was a means by which many women survived in the City of Churches.

**Free Tea, coffee and refreshments are provided.**

**EVERYONE WELCOME.**

**Admission Free to members**

**Non Members \$2.**



**Adelaide Northern Districts Family History Group Inc.**  
*Committed to Promoting Family History.*